

Figure 1: 3D Model of the Property

Contents

- Property Overview
 - Surfaces
 - Perimeter, Pitch and Surface Area
 - Edge Measurements
 - Edge Type
-



Property Overview

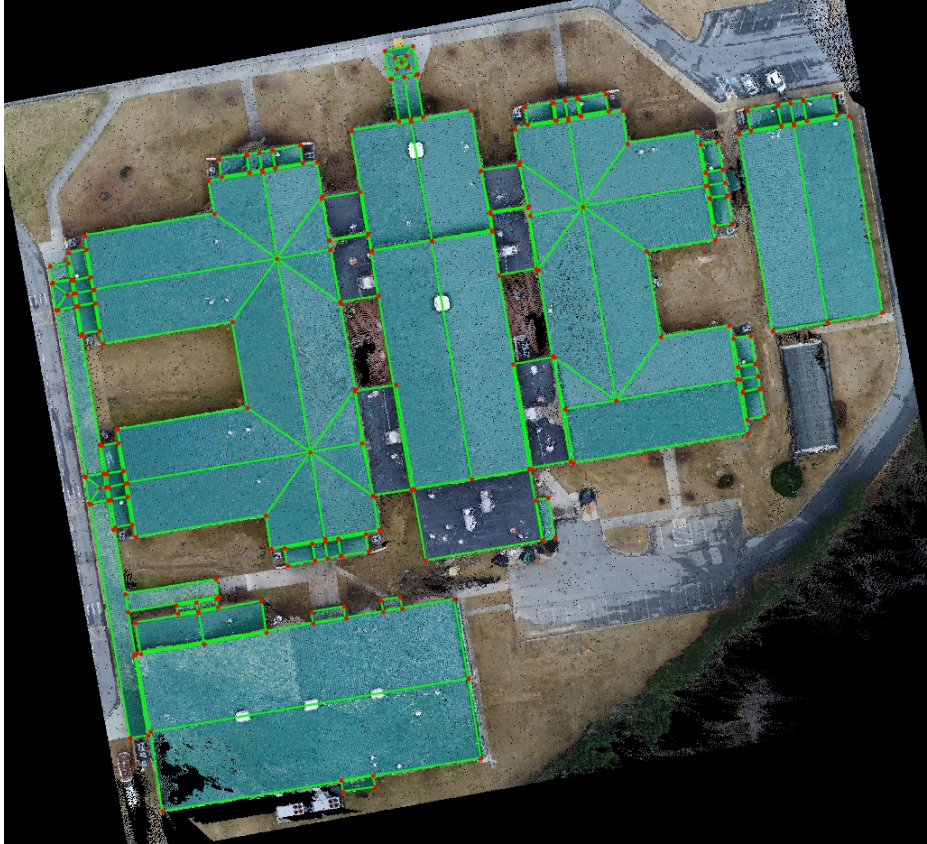


Figure 2: Overview



Surfaces

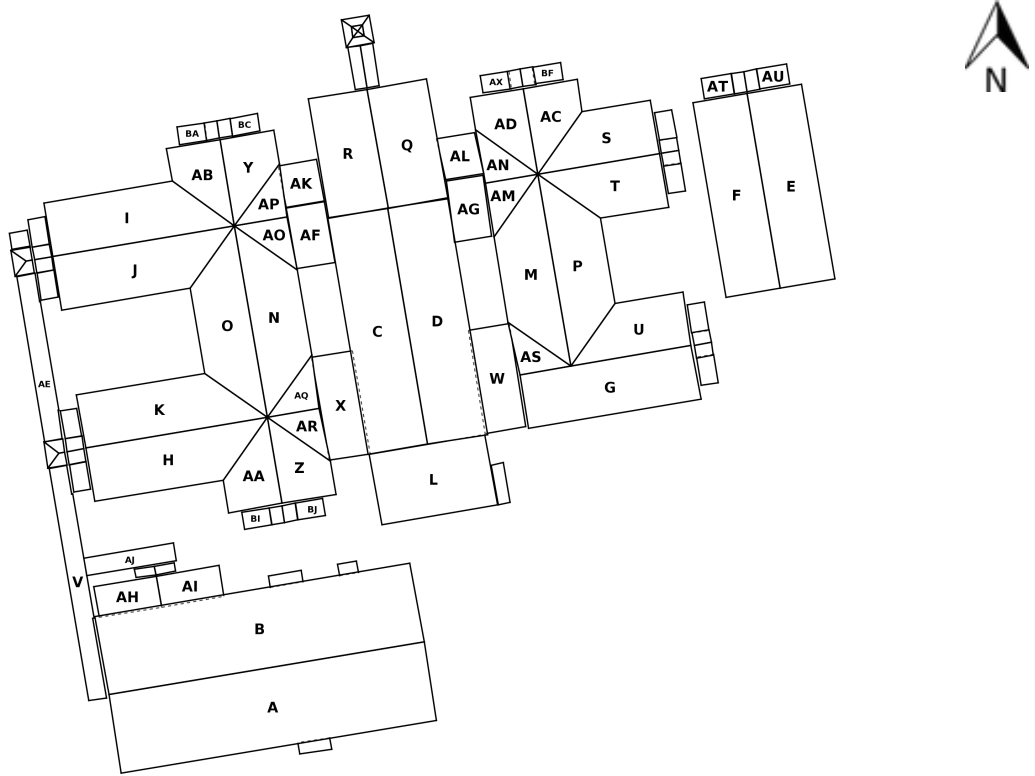


Figure 3: Surfaces



Perimeter, Pitch and Surface Area

Label	Perimeter	Slope	Pitch	Surface Area
B	544' 2 31/32"	14.94	3.2/12	12049.03
C	408' 8 13/16"	14.7	3.1/12	6865.29
D	408' 8 15/32"	13.7	2.9/12	6862.44
E	344' 7 19/32"	13.89	3.0/12	5157.9
F	344' 5 19/32"	14.91	3.2/12	5146.44
G	311' 6 15/16"	14.16	3.0/12	4471.53
H	303' 5 27/32"	14.2	3.0/12	4046.91
I	303' 6"	14.68	3.1/12	4045.58
J	303' 5 7/8"	14.28	3.1/12	4034.02
K	303' 4 31/32"	14.88	3.2/12	4020.83
L	255' 9 5/32"	0.48	0.1/12	3849.98
M	295' 10 21/32"	14.95	3.2/12	3616.03
N	295' 6 3/4"	13.38	2.9/12	3610.06
O	295' 6 1/8"	15.01	3.2/12	3606.57
P	295' 8 13/16"	13.82	3.0/12	3606.2
Q	247' 6 3/4"	13.77	2.9/12	3437.67
R	247' 5 15/32"	15.03	3.2/12	3431.62
S	221' 1 7/32"	15.0	3.2/12	2474.88
T	221' 2"	14.57	3.1/12	2465.32
U	219' 7 29/32"	14.65	3.1/12	2448.05
V	345' 6 7/32"	2.5	0.5/12	2013.48
W	197' 7 3/8"	0.31	0.1/12	1982.22
X	197' 7 21/32"	0.57	0.1/12	1981.96
Y	173' 0 25/32"	13.4	2.9/12	1564.24
Z	172' 7 5/32"	13.72	2.9/12	1559.07
AA	172' 5 23/32"	14.86	3.2/12	1544.49
AB	172' 4 7/8"	14.85	3.2/12	1543.23
AC	172' 0 1/16"	14.08	3.0/12	1538.02
AD	171' 4 1/4"	15.2	3.3/12	1529.78
AE	252' 5 1/32"	0.79	0.2/12	1448.91
AF	135' 10 15/32"	1.73	0.4/12	1093.43
AG	133' 10 9/16"	2.37	0.5/12	1051.49
Total	-	-	-	108096.67

Table 1: Perimeter, Pitch and Surface Area (units: ffi / ffi²)



Perimeter, Pitch and Surface Area

Label	Perimeter	Slope	Pitch	Surface Area
AH	130' 11 1/8"	14.95	3.2/12	937.62
AI	130' 9 13/32"	13.51	2.9/12	937.48
AJ	147' 8 3/32"	3.59	0.8/12	748.13
AK	109' 5 5/16"	2.78	0.6/12	747.12
AL	109' 3 1/32"	1.79	0.4/12	742.98
AM	126' 8 17/32"	14.01	3.0/12	683.02
AN	126' 8"	14.28	3.1/12	682.3
AO	126' 4 15/32"	13.57	2.9/12	678.1
AP	126' 4 9/32"	13.95	3.0/12	677.74
AQ	125' 11 1/4"	14.73	3.2/12	669.25
AR	125' 10 3/32"	14.8	3.2/12	667.3
AS	125' 7 9/32"	15.52	3.3/12	659.9
AT	68' 11 11/16"	1.96	0.4/12	285.98
AU	68' 7 29/32"	1.69	0.4/12	283.1
AV	75' 2 5/32"	14.51	3.1/12	250.03
AW	75' 2 23/32"	16.46	3.5/12	250.02
AX	62' 10 13/32"	1.06	0.2/12	232.17
AY	62' 4"	0.8	0.2/12	228.36
AZ	62' 3 17/32"	2.37	0.5/12	228.01
BA	61' 10 5/8"	3.43	0.7/12	227.25
BB	62' 0 13/16"	1.85	0.4/12	227.07
BC	61' 9 23/32"	2.42	0.5/12	226.91
BD	61' 11 15/16"	1.42	0.3/12	226.7
BE	71' 1 19/32"	6.8	1.4/12	226.29
BF	62' 2 7/8"	1.32	0.3/12	225.84
BG	60' 11 1/16"	1.3	0.3/12	219.65
BH	60' 10"	2.04	0.4/12	219.14
BI	60' 8 1/2"	2.28	0.5/12	217.46
BJ	60' 6 19/32"	1.56	0.3/12	216.67
BK	60' 8 29/32"	2.26	0.5/12	215.68
BL	60' 7 19/32"	1.59	0.3/12	215.62
BM	60' 7 1/8"	4.47	0.9/12	175.97
Total	-	-	-	13428.86

Table 1: Perimeter, Pitch and Surface Area (units: ffi / ffi²)



Perimeter, Pitch and Surface Area

Label	Perimeter	Slope	Pitch	Surface Area
BN	59' 0 31/32"	3.11	0.7/12	169.22
BO	46' 10 5/8"	2.31	0.5/12	136.79
BP	47' 2 15/32"	25.79	5.8/12	134.96
BQ	46' 10 3/32"	26.95	6.1/12	132.53
BR	44' 1 7/32"	27.48	6.2/12	120.57
BS	43' 11 7/16"	27.32	6.2/12	119.88
BT	43' 9 5/32"	26.67	6.0/12	118.78
BU	43' 9 11/32"	25.34	5.7/12	118.71
BV	43' 9 3/16"	28.33	6.5/12	118.68
BW	43' 4 3/4"	27.82	6.3/12	116.68
BX	43' 3 25/32"	26.15	5.9/12	116.47
BY	43' 2 1/8"	28.23	6.4/12	115.59
BZ	43' 1 5/32"	26.7	6.0/12	115.43
CA	43' 1 7/32"	26.25	5.9/12	115.25
CB	43' 1 1/8"	27.25	6.2/12	115.09
CC	42' 11 5/32"	27.5	6.2/12	114.61
CD	42' 11"	27.7	6.3/12	114.45
CE	42' 9 21/32"	26.29	5.9/12	113.94
CF	41' 7 15/32"	8.11	1.7/12	101.76
CG	44' 11 21/32"	26.69	6.0/12	90.93
CH	44' 10 13/32"	27.15	6.2/12	89.39
CI	44' 0 5/16"	26.7	6.0/12	87.61
CJ	40' 10"	27.03	6.1/12	86.81
CK	40' 10"	27.48	6.2/12	86.37
CL	40' 9 5/8"	27.4	6.2/12	85.93
CM	44' 1 5/8"	26.56	6.0/12	85.78
CN	43' 9 21/32"	25.83	5.8/12	84.81
CO	43' 9 5/8"	25.96	5.8/12	84.55
CP	40' 1 13/16"	24.33	5.4/12	82.3
CQ	39' 8 11/32"	14.31	3.1/12	80.78
CR	39' 8 25/32"	14.73	3.2/12	80.75
CS	20' 7 15/16"	43.46	11.4/12	20.16
Total	-	-	-	3355.56

Table 1: Perimeter, Pitch and Surface Area (units: ffi / ffi²)



Perimeter, Pitch and Surface Area

Label	Perimeter	Slope	Pitch	Surface Area
CT	20' 7 11/32"	43.52	11.4/12	20.08
CU	20' 6 5/8"	43.11	11.2/12	19.81
CV	20' 4 13/16"	42.79	11.1/12	19.61
Total	-	-	-	59.5

Table 1: Perimeter, Pitch and Surface Area (units: ffi / ffi²)



Edge Measurements.

Surface(s): A, B, C, D, E, F, G, H, I, J, K, S, T, U, AJ, AK, AL, AV, AW, AX, BA, BE, BI, BM, CG, CH, CT

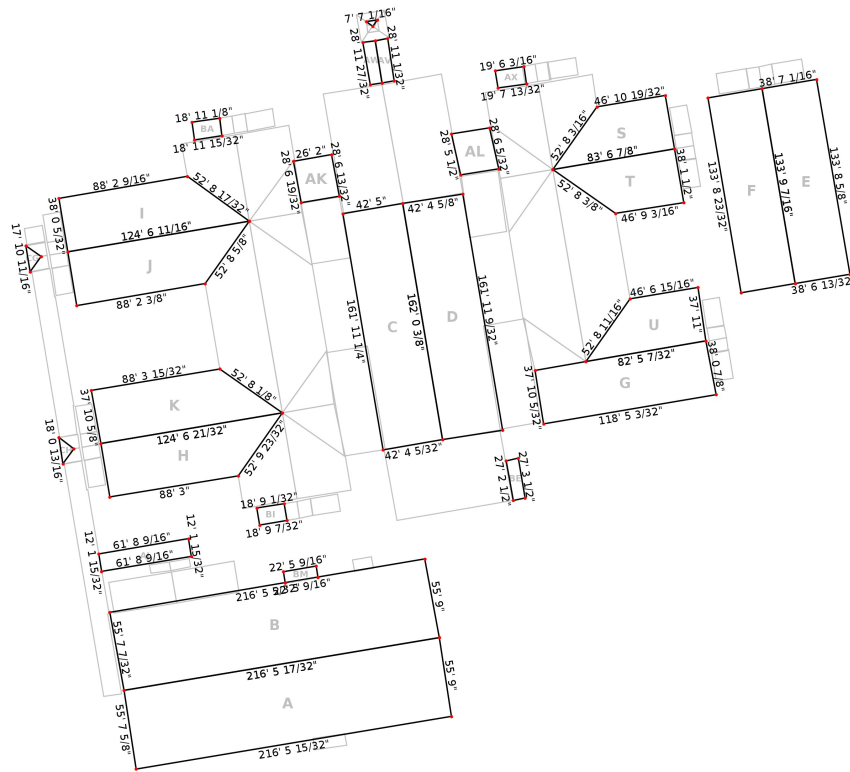


Figure 4: Edge Measurements



Edge Measurements.

Surface(s): L, M, N, O, P, Q, R, V, AH, AI, AT, AY, BB, BC, BF, BG, BJ, BN, CF, CI

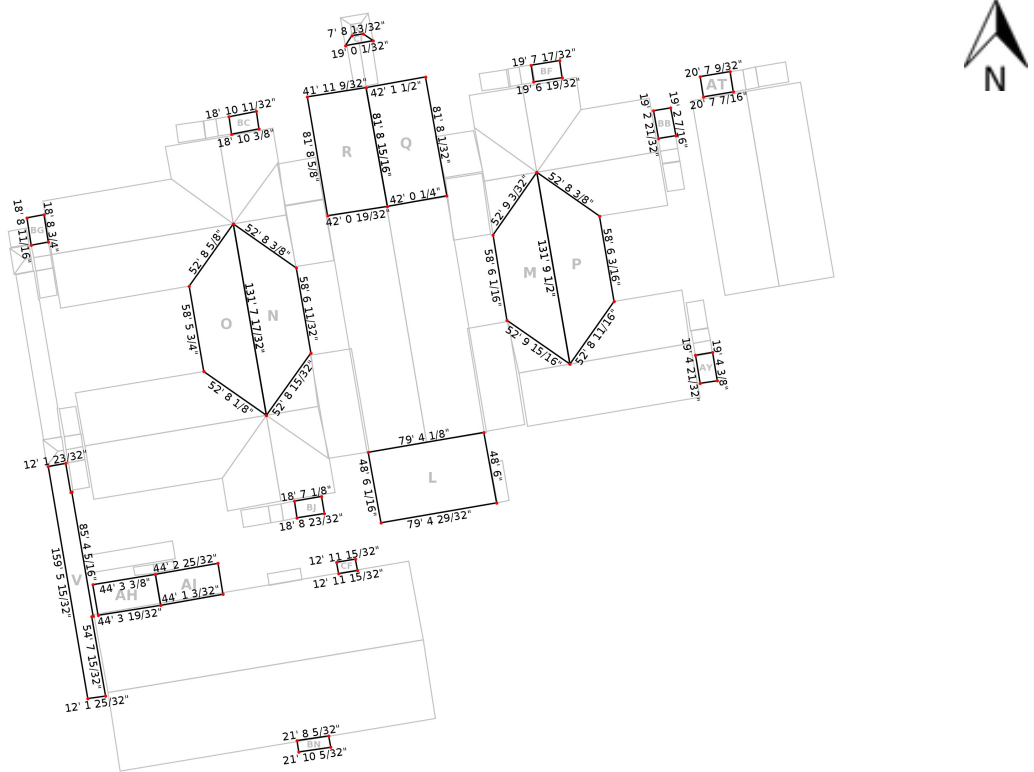


Figure 5: Edge Measurements



Edge Measurements.

Surface(s): W, X, Y, AB, AC, AD, AE, AF, AG, AU, AZ, BD, BZ, CD, CM, CQ, CR

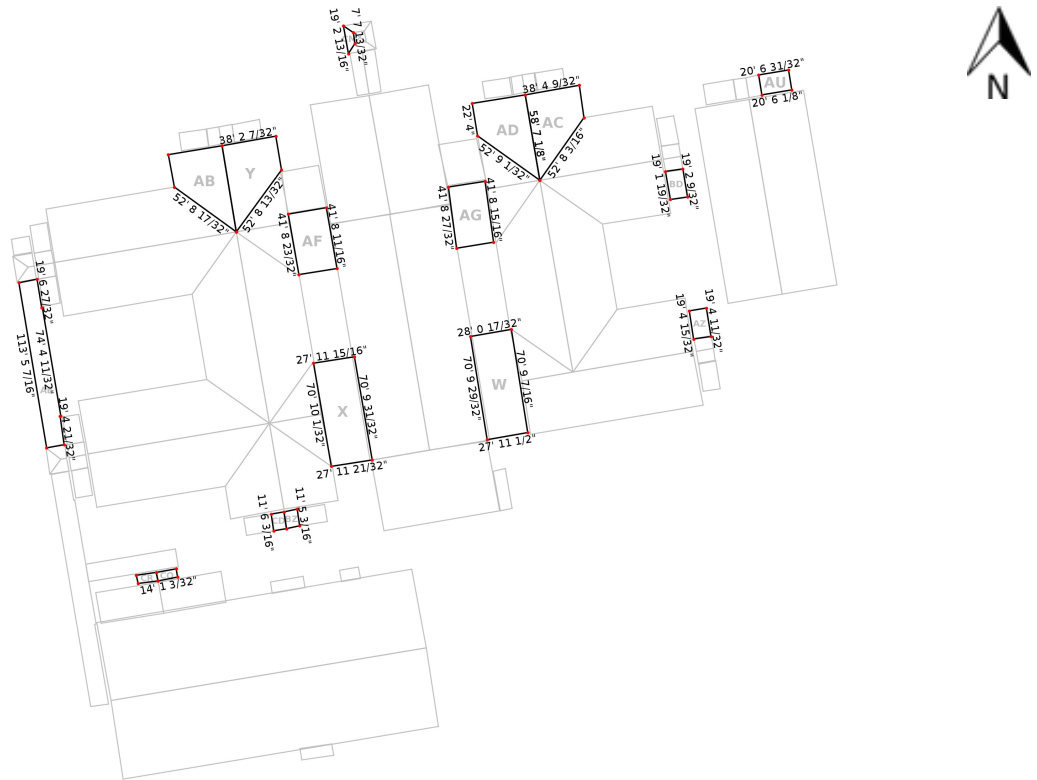


Figure 6: Edge Measurements



Edge Measurements.

Surface(s): Z, AA, AM, AN, AO, AP, AS, BH, BK, BP, BQ, BR, BS, BT, BU, BV, BW, BY, CA, CN

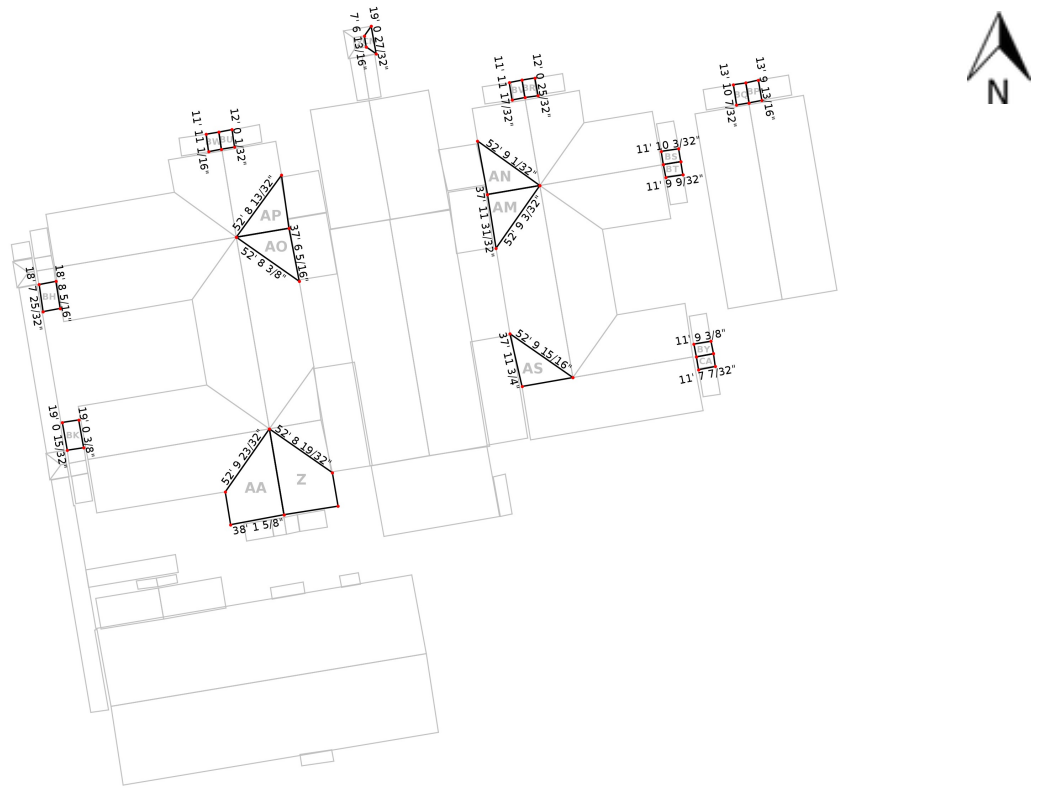


Figure 7: Edge Measurements



Edge Measurements.

Surface(s): AQ, AR, BL, BO, CO

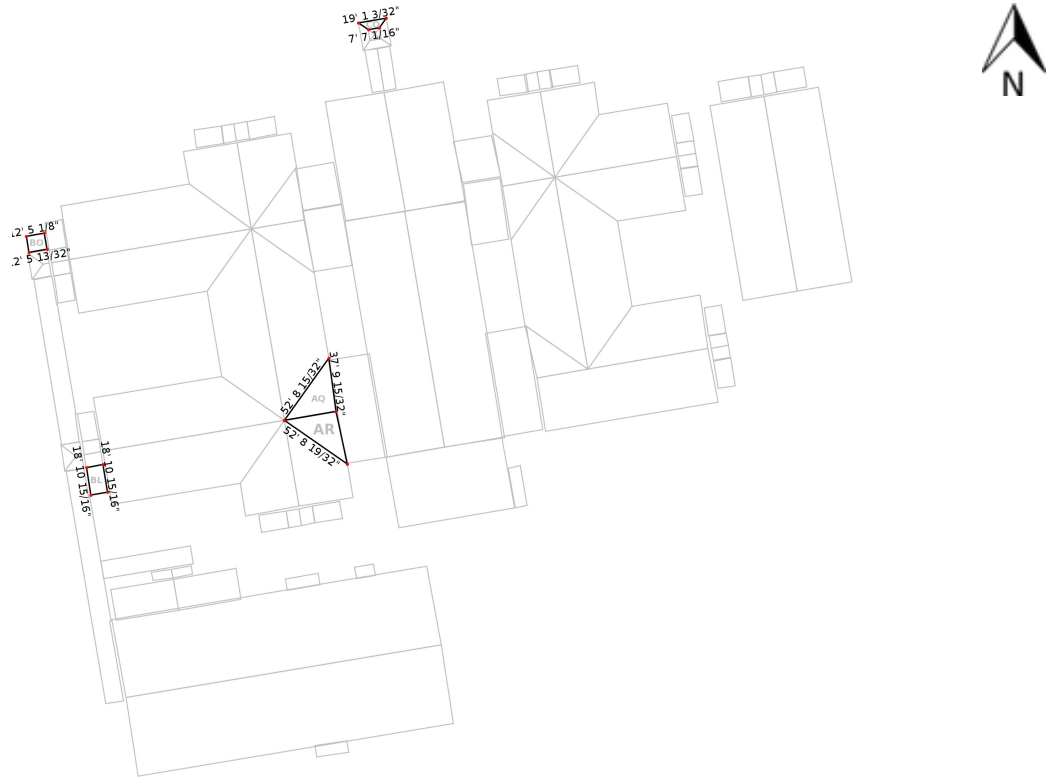


Figure 8: Edge Measurements



Edge Measurements.

Surface(s): BX, CB, CC, CE, CS, CV

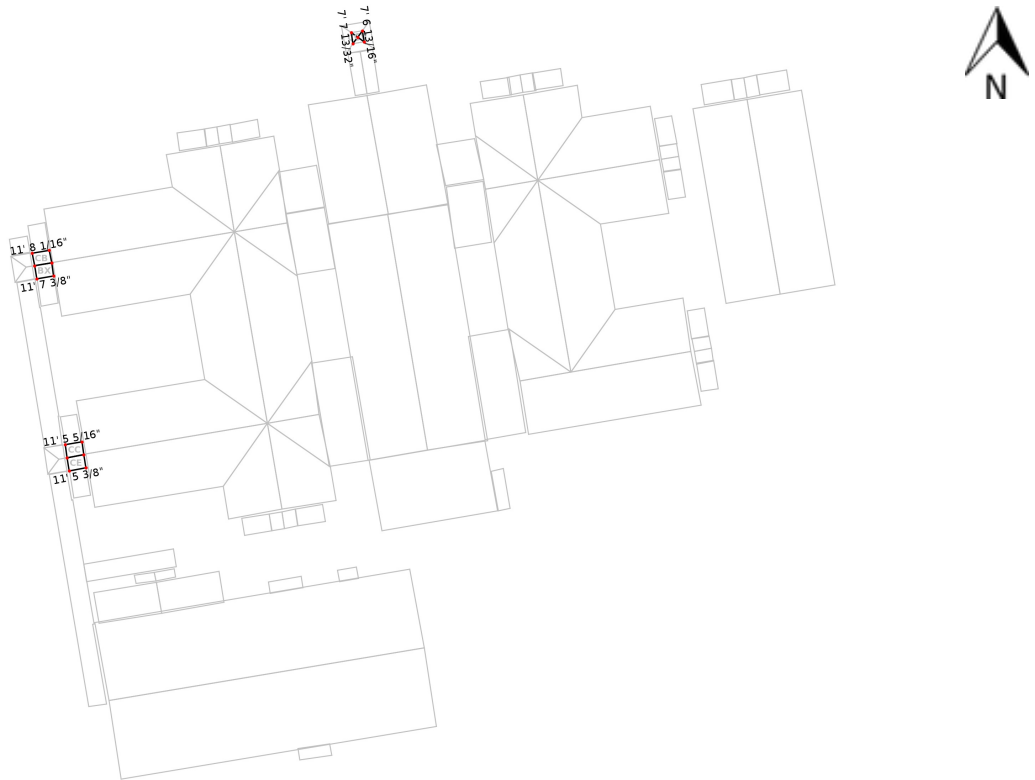


Figure 9: Edge Measurements



Edge Measurements.

Surface(s): CJ, CK, CL, CP, CU

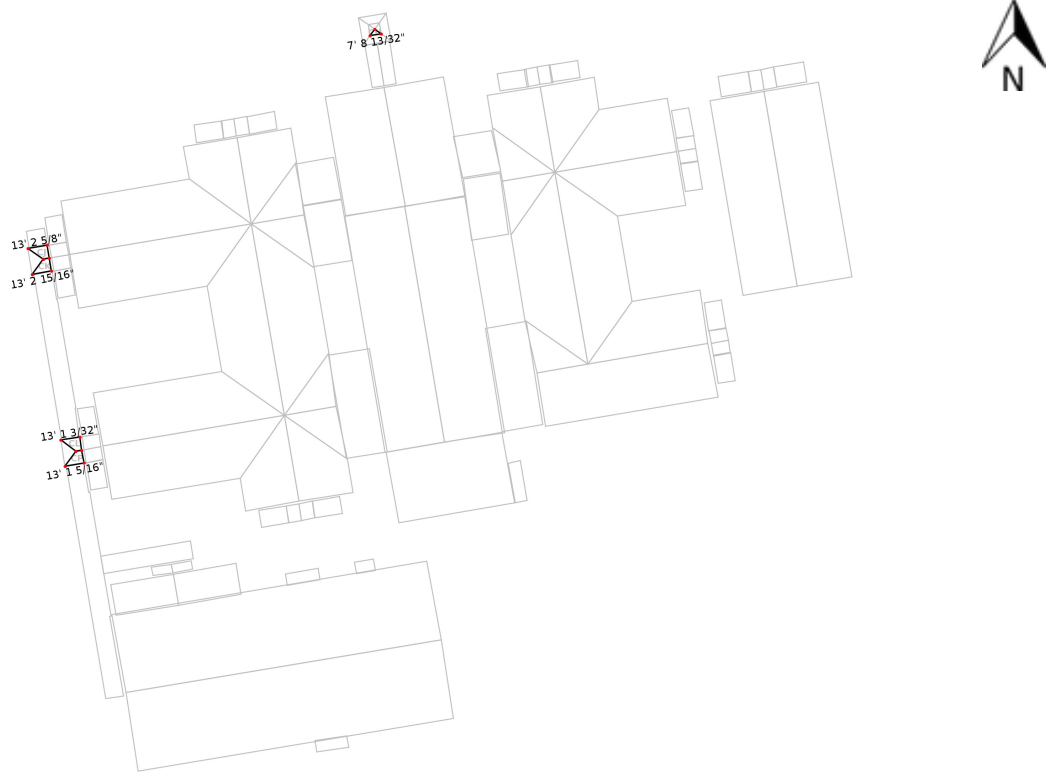


Figure 10: Edge Measurements



Edges Types



Figure 11: Roof Edge Classification (units: ffi)



Edge Type Summary

Classification	Edge Count	Total Length
VALLEY	14	738' 2 3/8"
EAVE	134	4440' 8 7/16"
RAKE	66	1840' 3 19/32"
HIP	12	114' 2 3/8"
FLASHING	0	0"
STEP_FLASHING	80	1725' 3 3/16"
UNKNOWN	0	0"
PARAPET	0	0"
Total	306	0

Table 2: Edge Type Summary (units: ffi)

